

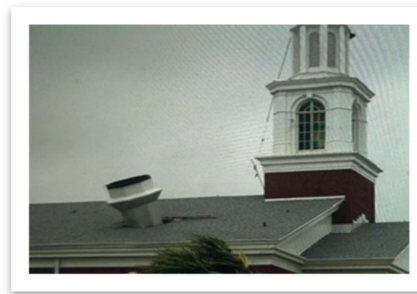
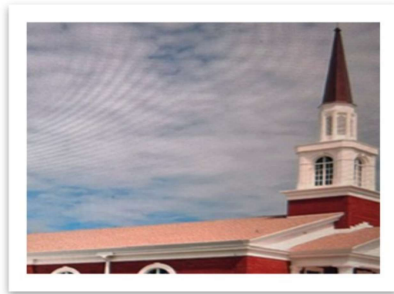
RIVERSIDE PRESBYTERIAN CHURCH 1996 - 2006

70th Anniversary

OUR COMMUNITY

As Cocoa Beach became a tourist and surfing destination, our local government began focusing on responsible growth. In 2002, voters overwhelmingly passed a referendum that reduced city building heights and density limits to preserve our small-town feel.

In 2004, four hurricanes hit the state of Florida. Two of them, Frances and Jeanne, caused major damage to the Space Coast. Local businesses were hit hard, and many residents were without power for days. Numerous buildings, including churches, faced clean-up and repair. The steeple of First Baptist Church, now Club Zion, was blown off and sent through the roof.



OUR CHURCH

Riverside's 40th Anniversary celebration was held for forty days in the Fall of 1996. It included Riverside's first Golf Tournament, a family picnic, ice cream social, and a memorable worship service. In January of 1997, the Board of Trustees was dissolved, and its responsibilities were shifted to a 15-member Session.

At the turn of the century, Riverside became a part of Project 2000, joining three other Presbyterian Churches to build a home in Cocoa with Space Coast Habitat for Humanity. In December of 2000, Rev. Dr. A. Allen Brindisi left Riverside after 13 years of dedicated service. Rev. Jane Nicholas continued to serve Riverside as Associate Pastor, joined by Rev. Ernest Flaniken as Interim Pastor in 2001. In January 2002, Rev. Dr. Robert Palmer became Interim Pastor until the arrival of Rev. Dr. Daniel D. Robinson in June 2002. That same year the debt on the Sanctuary was retired.



In 2003, the church adopted a "Commission" structure for the life of the church and its administration. This was followed the next year by the establishment of a "Vision Team" for the future of Riverside. The Vision Team completed its work in 2005 and the members were challenged to "Catch the Vision" by being "Energized to Serve God, Inspired to Grow and Empowered to Make a Difference!"